

EPSON

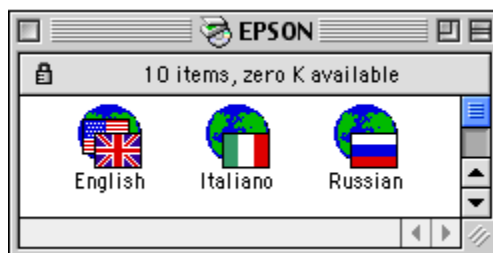
Knowledge Base

Article: KB020120

How do I reinstall an EPSON scanner on MAC OS Classic?

To reinstall simply insert the EPSON Scanner software CD-ROM and select uninstall. This will uninstall the driver. On completion insert the EPSON Scanner Software CD-ROM and run through the Installer.

Insert the EPSON Scanner Software CD-ROM. Select your language.



Double click **Installer**.



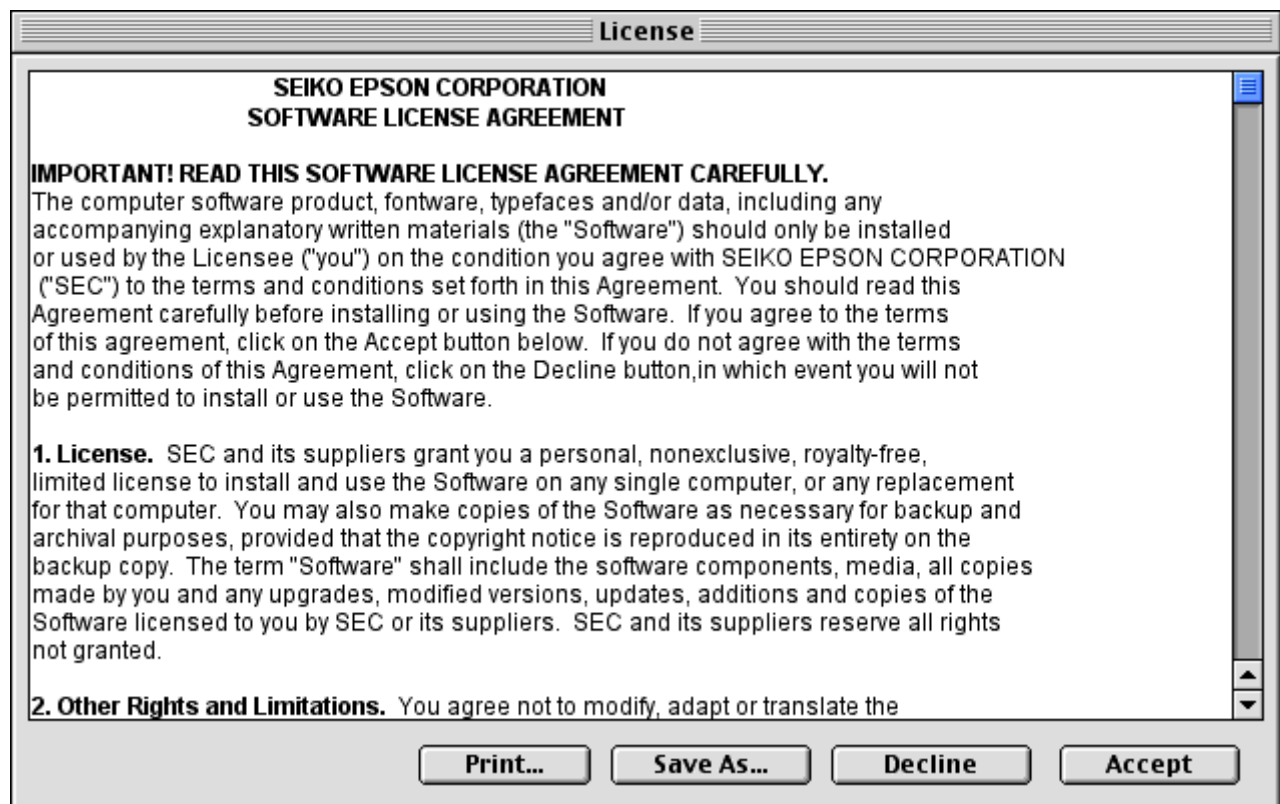
Follow the instructions of this screen.



Click **Start**.



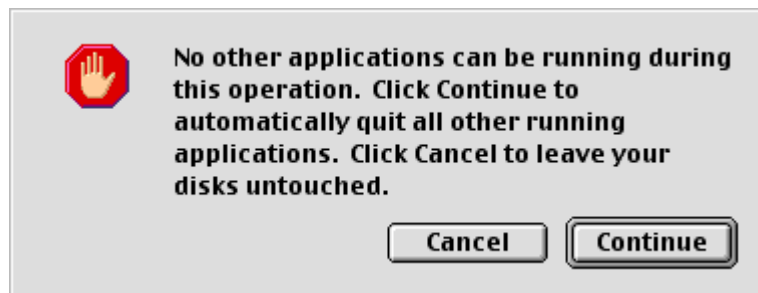
Click **Accept** to proceed.



At this window select **Uninstall** instead of Easy install. Click **Uninstall**.



Click **Continue**.



This will now uninstall. To install the scanner driver insert the EPSON Scanner Software CD-ROM and follow the onscreen instructions. For instructions please click the following link:

How do I install an EPSON Scanner on MAC OS?