

# EPSON

## Knowledge Base

Article: KB020111

### How do I install a USB EPSON printer on MAC OS Classic?

To install a USB printer insert the EPSON Printer Software CD-ROM and follow the onscreen instructions. After installation configure the printer in the chooser so that Apple Talk is **inactive** and Back Ground printing in **On**. Ensure that when the printer is switched on that there is a valid port in the chooser.

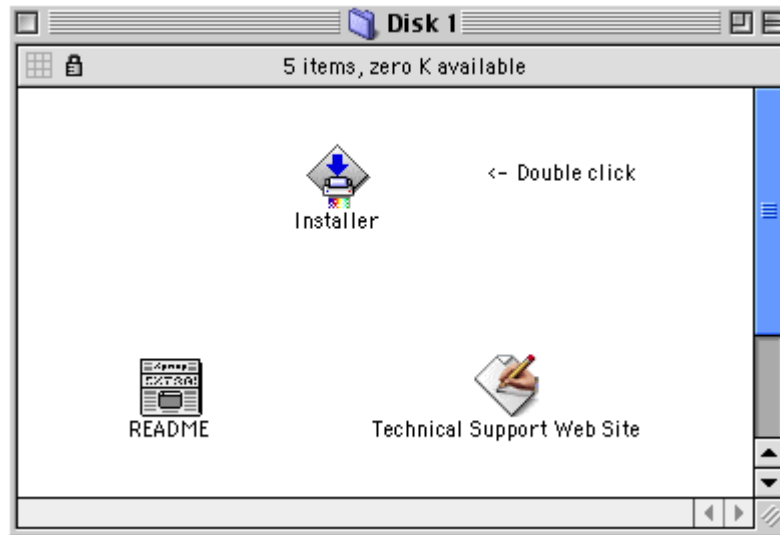
To proceed insert the EPSON Printer Software CD-ROM and select your language. The example installation is for the EPSON Stylus C80.



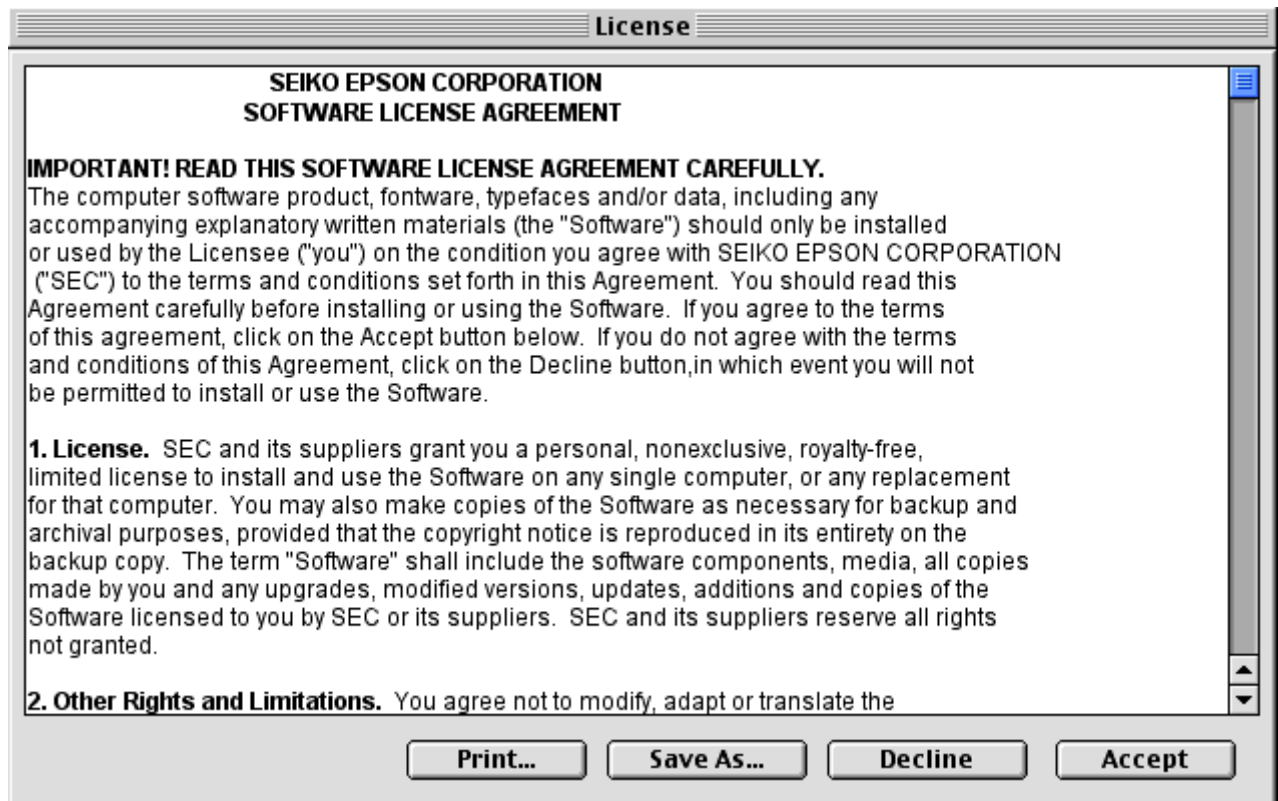
Double click **Install Software**.



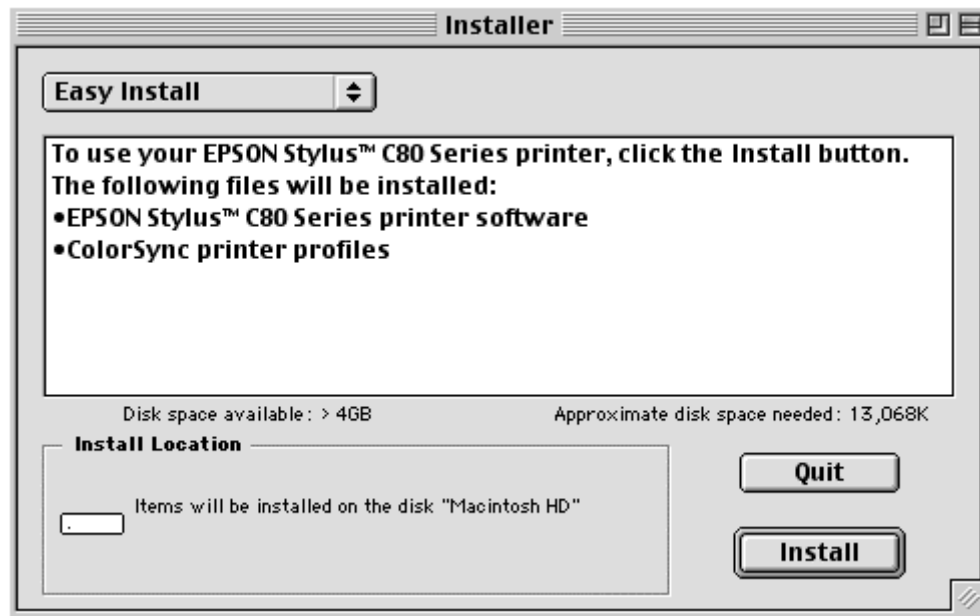
Double click **Installer**.



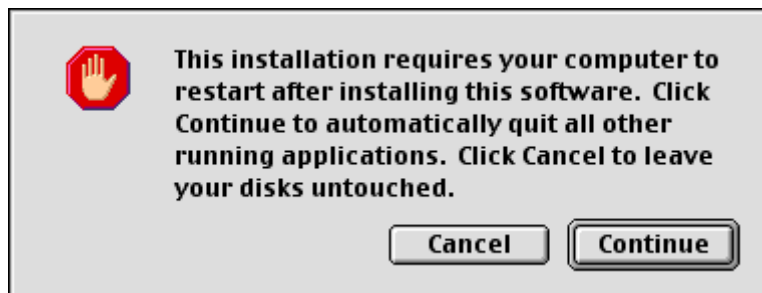
Click **Accept** to proceed.



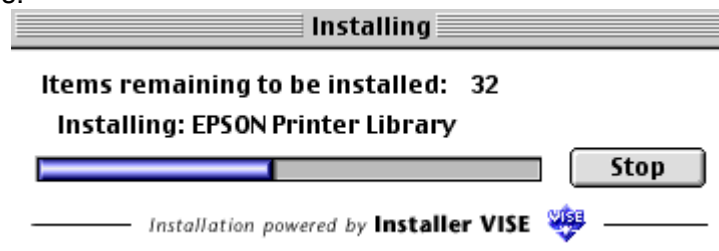
Click **Install**.



Follow the onscreen instructions and click **Continue**.



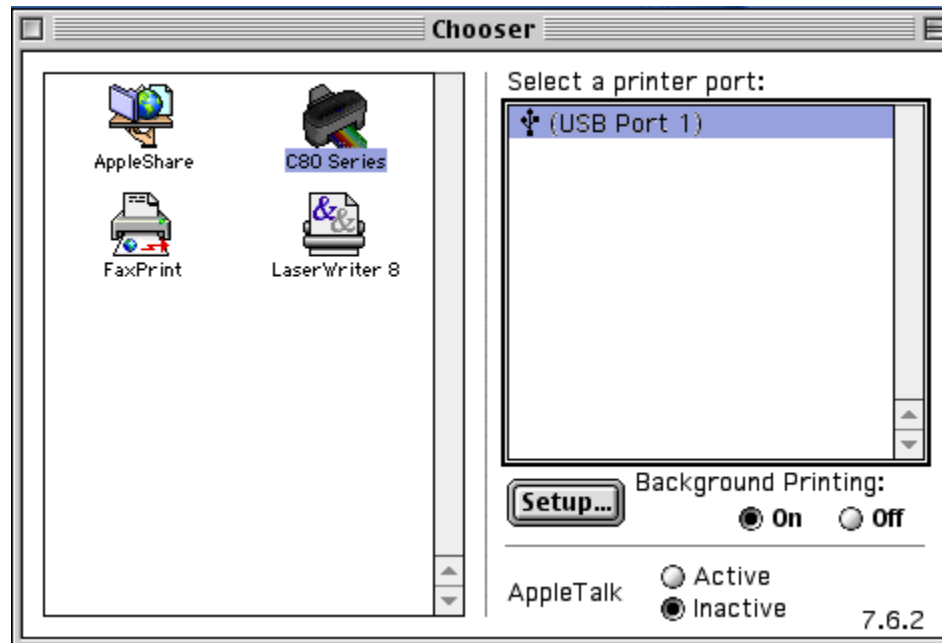
This will now copy the files.



Follow the onscreen instructions and click **Restart**.



After restarting you need to configure the printer in the chooser. Click the Apple Menu icon and select **chooser**.



Ensure that there is a valid port (in this case USB Port 1). Configure it so that Background printing is **On** and Apple Talk is set to **Inactive**. Your printer is now ready to use.