

EPSON

Knowledge Base

Article: KB020036

How do I install the Perfection 1250, 1650 and 2450 Photo scanners on Windows 98, ME, 2000 and XP?

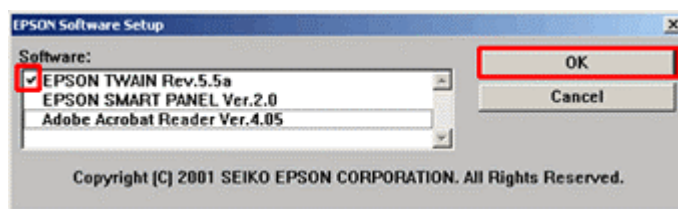
Insert the EPSON Scanner software CD-ROM and install EPSON Twain. Restart the computer and connect the scanner. Windows will detect and configure the scanner automatically.

Instructions

The example used here is the Perfection 1650. Insert the EPSON Scanner software CD-ROM supplied with the scanner. Click on **Install Scanner Software** and click the arrow pointing to the right.



Select **EPSON TWAIN** only and click **OK**.



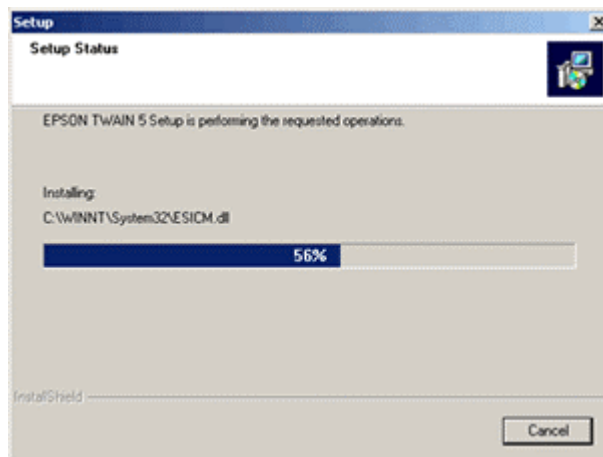
Click **Next**.



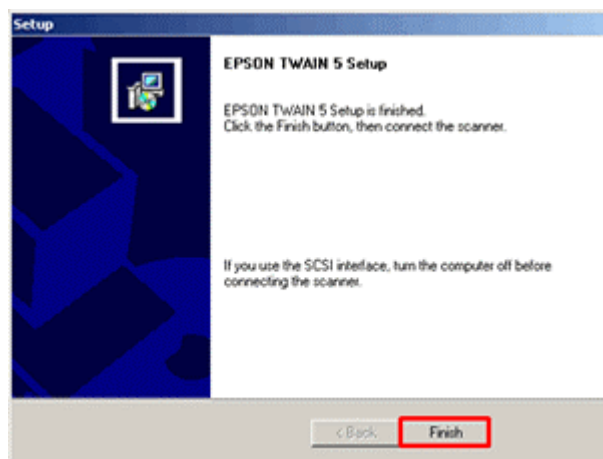
Click **Yes** to accept the licence agreement.



This will then copy the files.



Click **Finish** to confirm completion.



Windows 98 only: If your system requests the Windows disk please click the following link for further instructions:

[What should I do when I get the message "Please install the disk labelled Windows 98 Second Edition CD-ROM, and then click OK"?](#)

Restart the computer. Once restarted connect and switch on the scanner. Windows will automatically install and configure the scanner. To enhance the functionality of the scanner you should install the EPSON SMART PANEL. For instructions please click here:

[How do I install the EPSON SMART PANEL?](#)