

EPSON

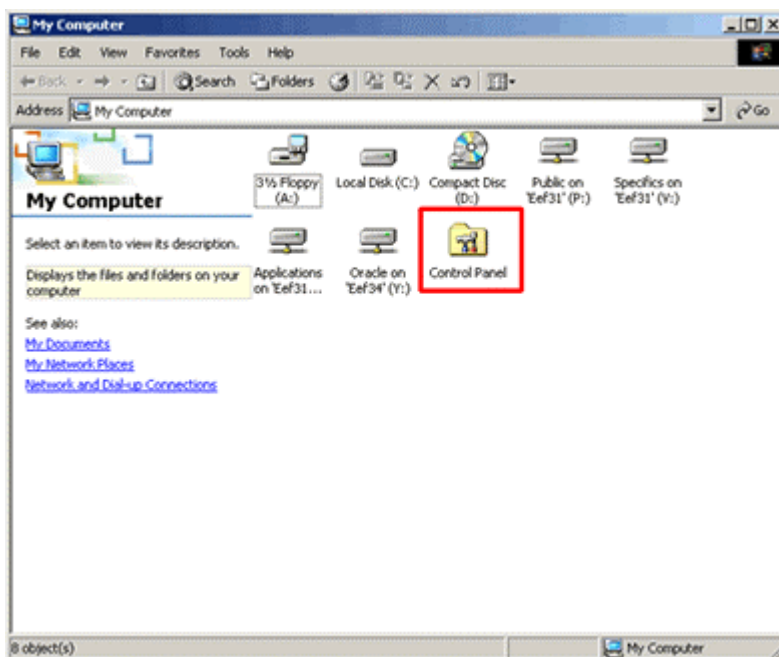
Knowledge Base

Article: KB020029

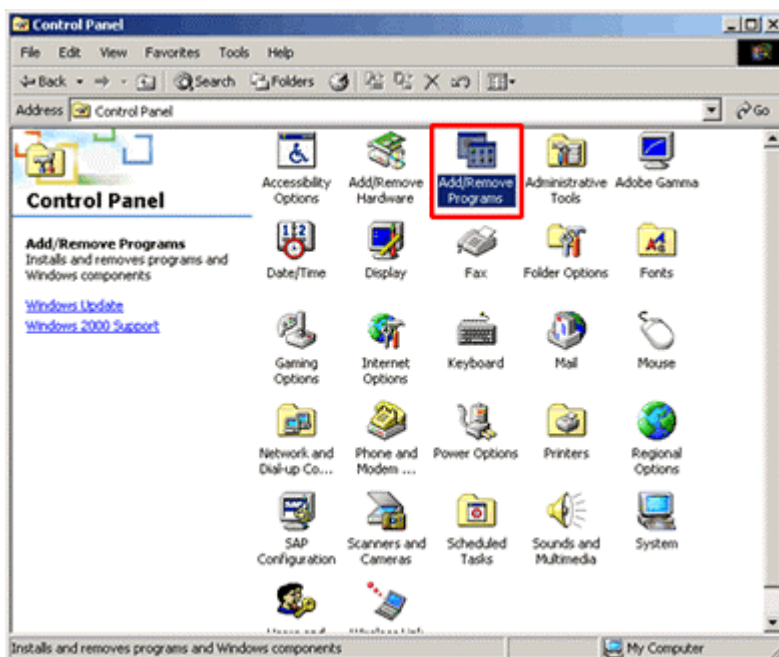
How do I uninstall a scanner driver on Windows 98, ME, 2000 and XP?
Remove EPSON TWAIN from Add/Remove programs list in control panel.

Instructions

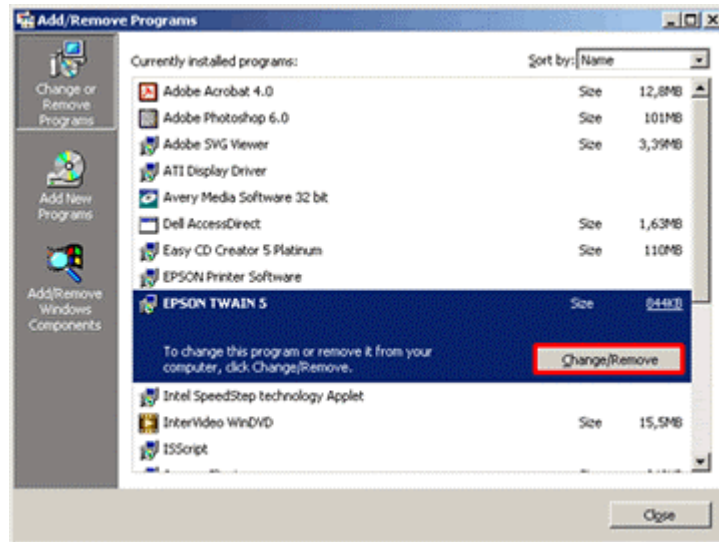
Please proceed by Double clicking the **My Computer** icon on your desktop. Please click on **Control Panel**.



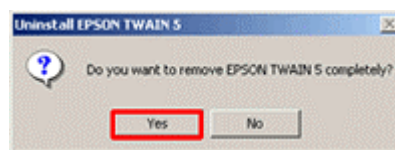
Then click on **Add/Remove programs**.



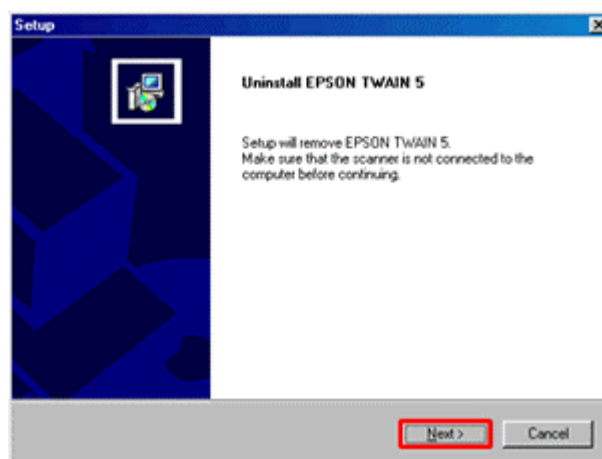
Highlight **EPSON TWAIN** and click on **Change/Remove**. On Windows 98, ME the button is called **Add/Remove**.



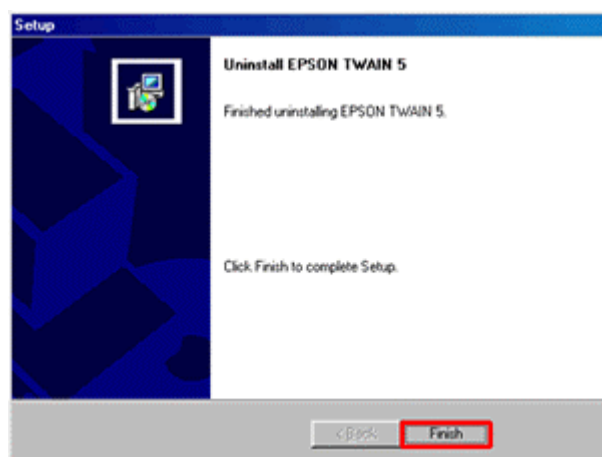
Confirm by clicking **Yes**.



Click **Next**.



Click **Finish**.



Please now restart your computer and the driver is now successfully uninstalled.