

EPSON

Knowledge Base

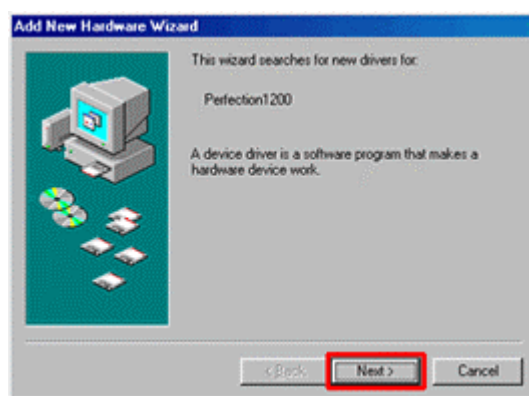
Article: KB020023

How do I install the EPSON Perfection 1200 Photo, 1200S, 1200U, 1240U, 1640SU, 610 and 640U on Windows 95, 98 or Me?

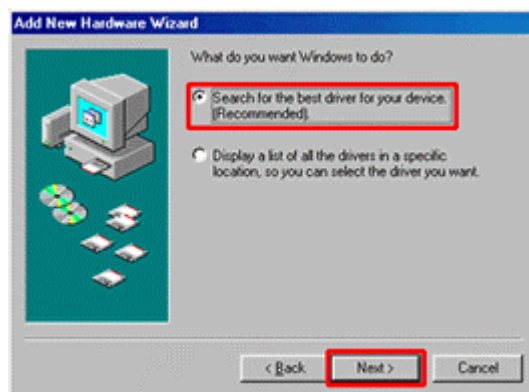
Connect the scanner to the PC, and then turn the power on. The Found New Hardware Wizard will now appear. Follow the on-screen instructions, selecting Specify a location and enter the following path X:\EPSON\ENGLISH\WIN9X (where X is your CD-ROM drive letter). Now run the CD-ROM and install EPSON Smart Panel. When completed please restart your computer.

Instructions

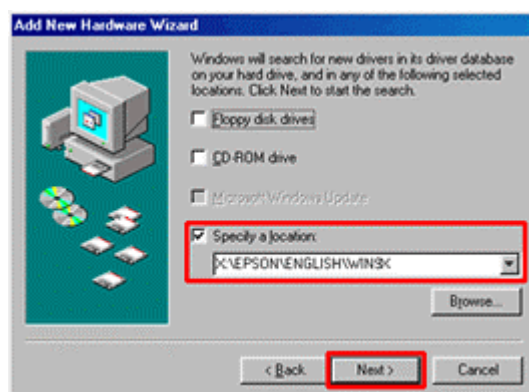
Connect USB cable between computer and scanner and then switch the scanner on. The **Found New Hardware Wizard** will appear on screen. Click **Next**.



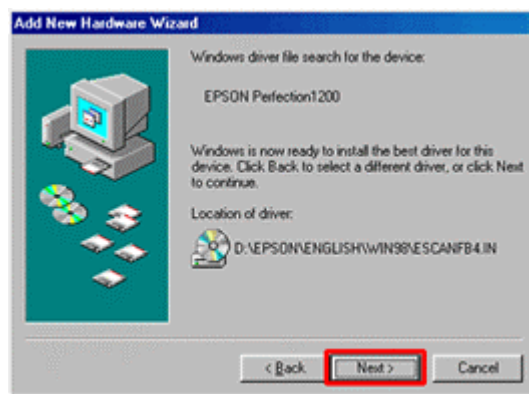
Click **Search for the best driver** and click **Next**.



Tick **Specify a location** and type in **X:\EPSON\ENGLISH\WIN9X** (where X is the letter of your CD-ROM drive) and click **Next**.



Windows will find the scanner driver files, click **Next**.



The driver installation is now complete, click **Finish**.

